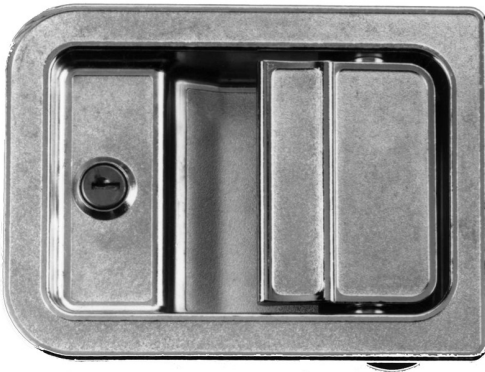


030-0300  
Entrance Door  
Hardware Set



**DESIGNED FOR:**

- On-highway entrance door applications

**FEATURES/BENEFITS:**

- Inside lock provides override if outside paddle should be locked
- Inside "L" handle provides door closure feature
- Manually operated safety dead bolt
- Two rotor - two stage rotary door latch with primary and secondary latching positions



**TriMark Corporation**  
500 Bailey Avenue  
P.O. Box 350  
New Hampton, Iowa 50659  
United States  
Tel: 641-394-3188  
Fax: 641-394-2392  
1-800-447-0343  
[www.trimarkcorp.com](http://www.trimarkcorp.com)

**TriMark Europe**  
Cedar Court  
Walker road  
Bardon Hill  
Coalville LE67 1TU  
United Kingdom  
Tel: +44(0)1530 512460  
Fax: +44(0)1530 512461  
[www.trimarkeu.com](http://www.trimarkeu.com)

**AVAILABLE:**

- Keyed random
- Right or left hand configurations (right hand shown)

**INSTALLATION:**

- (3) #10-24 UNC mounting screws (included)
- (4) 1/4-20 UNC mounting fasteners (included)

**MATERIAL:**

- Exterior housing and paddle, interior cover plate and "L" handle: die cast zinc alloy
- Rotors: heat treated, smooth edge stamped steel

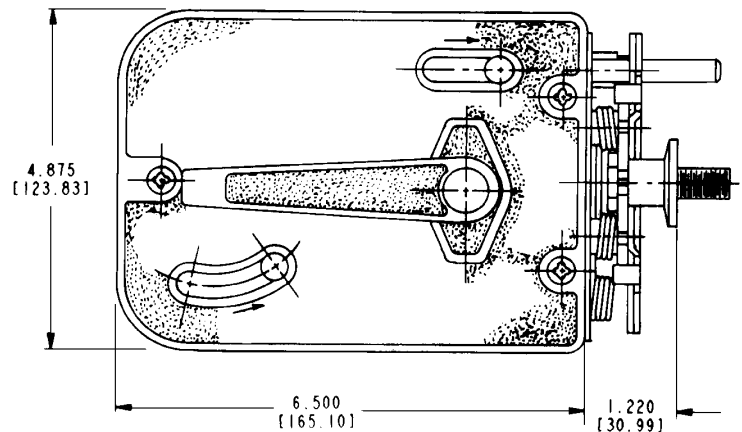
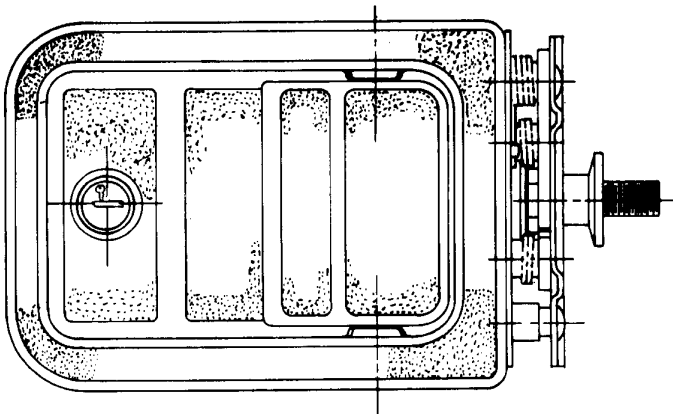
**FINISH:**

- Copper-nickel-chrome plated
- Black powder coated

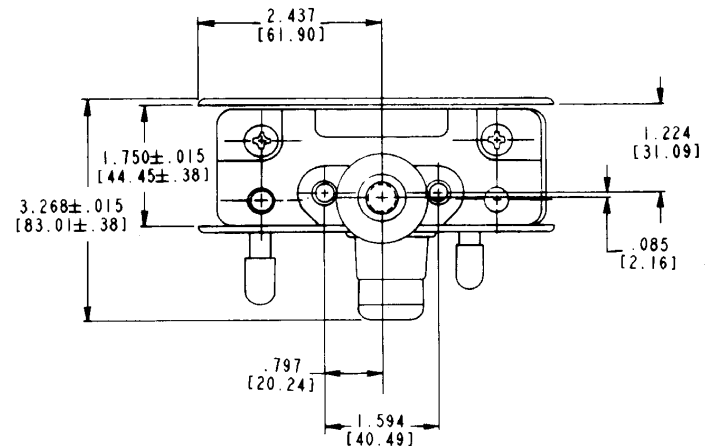
**INTERNAL LUBRICATION:**

- Oven-cured dry lubricant is applied at factory on all critical moving parts
- Additional lubrication to be applied in the field if required.

**Individual part dimensions are for reference only. Refer to individual part drawings for complete dimensions, specifications, and installation procedures. Engineering assistance and application drawings are available.**

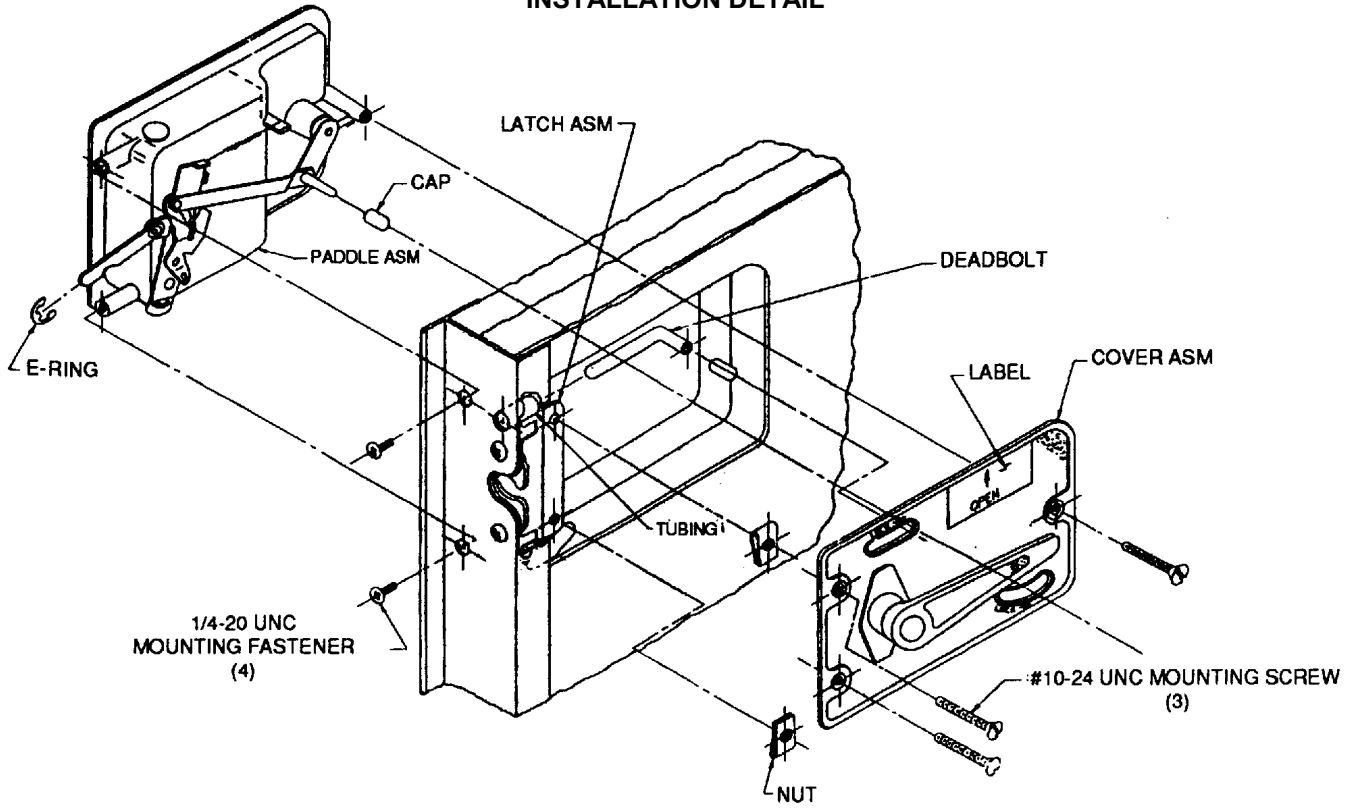


For more information visit  
[www.trimarkcorp.com](http://www.trimarkcorp.com)



**CAUTION:** Applications of this system may fall within the requirements of FMVSS 206 and SAE J839 safety standards. These safety related requirements are dependent on door application, e.g. front and rear hinged doors, sliding doors, or hinged upward swinging doors. The entire door hardware system must be included in the design/analysis process latch, handle, lock mechanism, cables/rods/linkages, fasteners, hinges, etc. This ensures compatibility of all components within the hardware system. If FMVSS 206 is a requirement, then all of the components within the door system must comply with strength, inertia and locking requirements as specified within the Standard. Note that this product complies with FMVSS 206 when tested in accordance with SAE J839 and that this system meets FMVSS 206 loads and locking requirements and may be used in FMVSS 206 applications pending TriMark application approval.

### INSTALLATION DETAIL



### RECOMMENDED DOOR CUT-OUT DETAIL

